



+31 488 74 54 74
info@geurtsstrucks.com

Buskesdries 14
6673 DP,
Andelst
netherlands

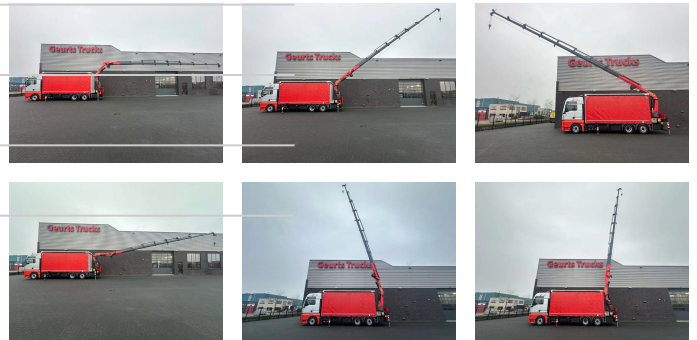
MAN

26.510 6X2 MET PALFINGER 37.002

MONTAGEKRAN/DACHDECKERKRAN/ROOFCRANE/KRAAN/KRAN

General-specifications

Id	1790222
Make	MAN
Type	26.510 6X2 MET PALFINGER 37.002 MONTAGEKRAN/DACHDECKERKRAN/ROOFCRANE/KRAAN/KRAN/GRUA
Year	2020
Operating hours	794
Mileage	372.629 km
Construction	Crane
Gross weight	26.000 kg
Emissionclass	6



Technical-specifications

First registration date	18-11-2020
Fuel	Diesel
Transmission	Automatic
Vehicle identification number	WMA21XZZ0MM866914
Axle configuration	6x2
Axle count	3
Weight	18.160 kg
Power kw	375

Extras

Air conditioning	Media System
Air horn	Navigation system
Aluminium fuel tank	Particulate filter
Anti-lock braking system	PTO
Central locking	Refrigerator
Coupling	Roof spoiler
Cruise control	Sleeper cab
Electrically adjustable door mirrors	Speed limiter
Fog lights	Toolbox
Heavy duty engine brake	Visor



+31 488 74 54 74
info@geurtstrucks.com

Buskesdries 14
6673 DP,
Andelst
netherlands

Power hp	510
Load capacity	7.840 kg
Lifting height	2.450 cm
Lifting capacity	9.100 kg

€ On request